

## RC2-310B Screw Compressor

### Specifications

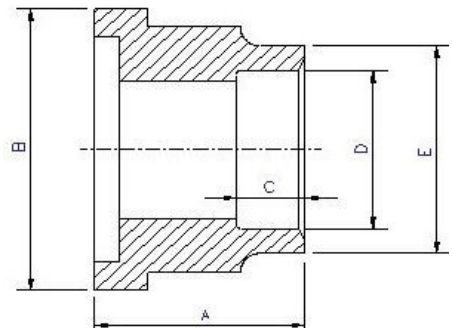
<b>Compressor</b>	Displacement	CFM	60 Hz	218	
	Rated Speed	Rpm	60 Hz	3550	
	Volume Ratio	Vi		2.6 (standard other Vi available)	
	Nominal Hp	110 Hp at 60 Hz			
	Capacity Control	%			25%,50%,75% & 100% Step Capacity Control, 50%~100% Continuous Stepless Capacity Controls
	Lubrication	Differential Pressure Feed Lubricant			
<b>Motor</b>	Type	3 Phase, 2 Pole, Squirrel Cage, Induction Motor			
	Insulation	Class F			
	Protection	3 PTC Protection 1 per winding			
<b>Lubricant Charge</b>	Gallons	4.2			
<b>Oil Heater</b>	Watts	150			
<b>Hydrostatic Pressure test</b>	lb/in <sup>2</sup> G	597			
<b>Weight</b>	Pounds	1279 Comp. (skid 61x32x35 - <b>Crated weight 1653</b> )			

### Standard Compressors Accessories

- Modulating Slide Capacity
- Weather Proof Terminal Box for outdoor applications
- 115/1/60 Control Voltage
- 115/1/60 Crankcase heater
- Horizontal Discharge Check Valve
- Discharge Service Valve (Discharge Stop Valve) with standard connection sizes and supplied with flanges and bushings
- Suction Service Valve (Suction Stop Valves) with standard connection sizes and supplied with flanges and bushings
- Oil Level Float Switch
- Suction Filter
- Oil Filter
- PSI Relief Valve
- Oil Sight Glass
- PT1000 for Reading Motor Temp
- INT69HBY supporting motor and discharge (PTC) temperature sensor protection as well as Phase Loss and Phase Reversal at Start Up Only

### Ports

- External Oil Cooler
- Liquid Injection (into screw chamber)
- Economizer
- Suction, Discharge & Oil Service



### Connections

<b>Discharge Stop Valve</b>	2"					
<b>Horizontal Discharge Check Valve</b>	2"					
<b>Suction Stop Valve</b>	3"					
<b>Economizer</b>	7/8" solder					
<b>Liquid Injection (chamber)</b>	5/8" flare	A	B	C	D	E
<b>Discharge Side</b>	Copper Pipe Sizing 2 1/8"	1.97"	3.54"	1.18"	2.14"	2.56"
<b>Suction Side</b>	Copper Pipe Sizing 3 1/8"	2.60"	4.72"	1.77"	3.14"	3.54"

### MCC & LRA

#### R22, R407C, R404A, R507A, R134a

Hertz	Volts	Maximum Continuous Current	Y-Δ		Part Wind Start	
			Locked Rotor Amps (Y)	Locked Rotor Amps (D)	Locked Rotor Amps (D)	Locked Rotor Amps (DD)
60	220	421	520	1560	1121	1725
60	460	201	272	815	497	765